



CUSTOMER INFORMATION

Chukka Boot

Description:

With a full bellows tongue and a soft padded ankle, our Chukka Boots provide fantastic comfort and functionality. No matter what the task at hand entails, our Chukka boots are an outstanding footwear solution.

- BS EN ISO 20345:2011 S1P SRC (with midsole)
- BS EN ISO 20345:2011 S1P (without midsole)
- 200 joule steel safety toe cap
- Optional penetration resistant midsole
- Dual density PU oil resistant sole
- Antistatic sole
- Energy absorbing heel
- Full bellows tongue

Fabric:

- Black leather
- Cambrella liner

Applications:

Risk assessed tasks requiring foot protection from a range of hazards

Colourways:



Black

Product Codes:

90670-B	5 - 13	Without Midsole - Black
90029	3	With Midsole - Black
90100-B	4 - 13	With Midsole - Black

Standards:



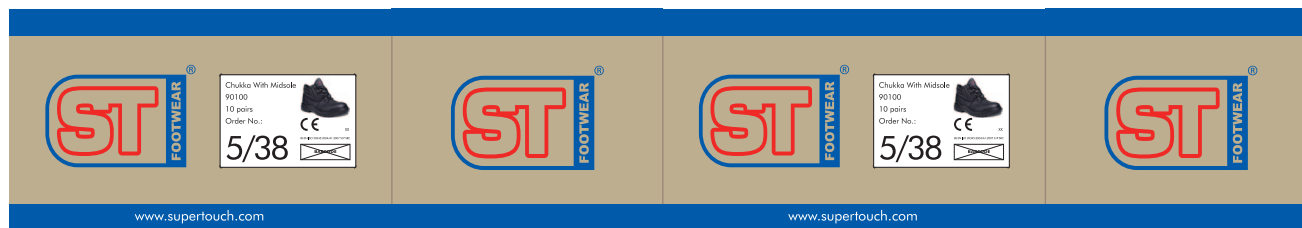
EC Council Directive 89/686/EEC
 BS EN ISO 20345:2011 S1P SRC (With Midsole)
 BS EN ISO 20345:2011 S1P (Without Midsole)

Size Chart:

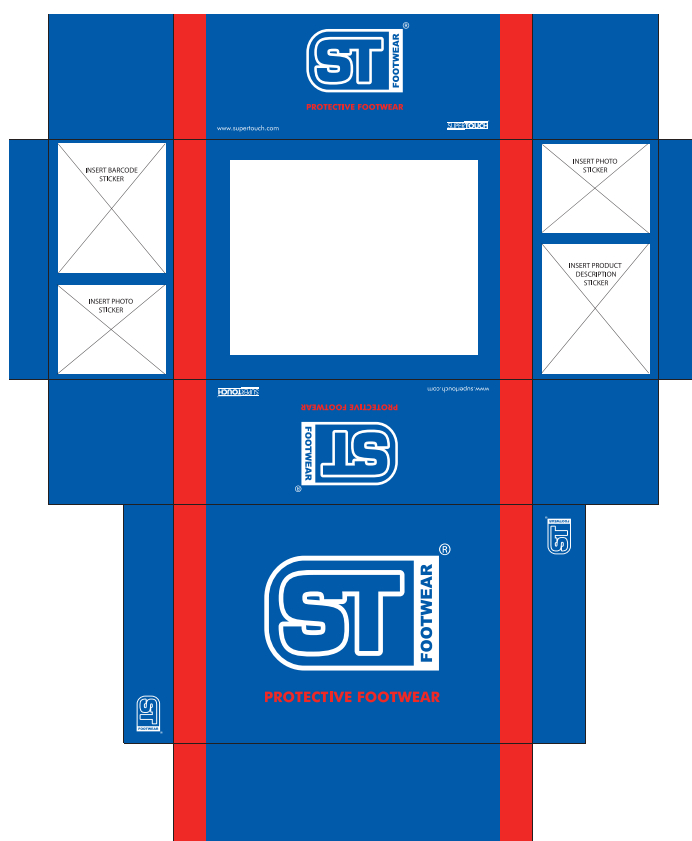
UK Size	3	4	5	6	7	8	9	10	11	12	13
EU Size	36	37	38	39	40	41	42	43	44	45	46

Packaging: 1 pair per box - 10 boxes per case

Outer Carton Artwork:



Inner Artwork:



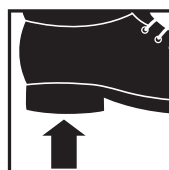
Feature Symbols:



Product features
200J toe cap



Product features
reinforced midsole



Product features energy
absorbing heel



Product features
antistatic sole

The information shown on this specification sheet is intended as a guide and is advisory only. All details were correct at the time of issue. As conditions of use are ultimately beyond our control, we advise that the product is tested for the particular application before use.